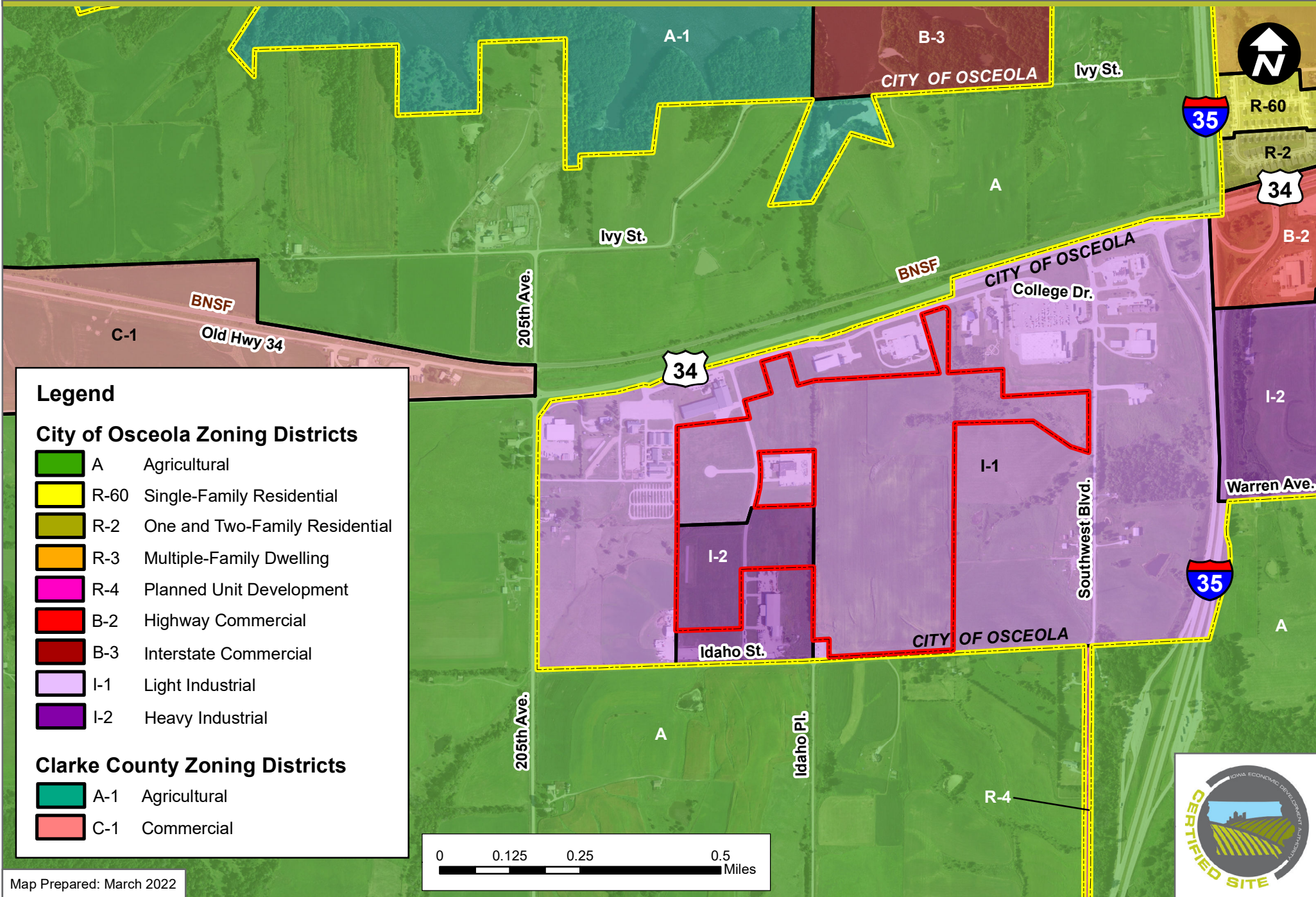


E. Eddy Saylor Industrial Park (138.07 ACRES)

OSCEOLA, IOWA - ZONING MAP



Legend

City of Osceola Zoning Districts

- A Agricultural
- R-60 Single-Family Residential
- R-2 One and Two-Family Residential
- R-3 Multiple-Family Dwelling
- R-4 Planned Unit Development
- B-2 Highway Commercial
- B-3 Interstate Commercial
- I-1 Light Industrial
- I-2 Heavy Industrial

Clarke County Zoning Districts

- A-1 Agricultural
- C-1 Commercial

